

Premier-Roll

Fully Remote Control Insulated Rolling Garage Doors

Premier-Roll Garage Doors combine the benefits of insulated garage doors with the space saving efficiency of vertical rolling garage doors. Our doors are fully automated allowing them to be opened with a single push of a button on your keyfob transmitter.

Premier-Roll Garage Doors are supplied with the following as standard:

- Fully Insulated door sections, in a choice of 11 colour finishes with specialist finishes available.
- Reinforced bottom section.
- Heavy duty bottom seal.
- Reinforced Aluminium side track system complete with double brush strip seals.
- Aluminium reinforced head plate sections specially designed for rolling garage door systems.
- Full box cover manufactured from aluminium giving added strength and safety.*
- All Premier-Roll parts come colour finished.
- Tubular motor drive unit complete with manual over-ride facility and over-ride crank arm.
- Remote control unit with high security rolling code system, on-built courtesy light unit.
- Two keyfob transmitters.
- Additional garage mounted control switch.
- Safety photo reflective system ensuring the door will stop and return to open when activated.
- Security locking system ensuring the Premier-Roll is locked when in the closed position.

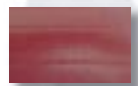
From Design To Installation - There Is Only *One Name*



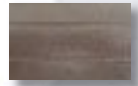
**KAISER
DOORS**
LIMITED

Colour Finish Options

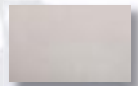
Premier Roll comes with a choice of eleven colours. Our colours are a hard wearing, baked enamel finish.



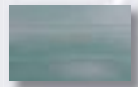
Red*



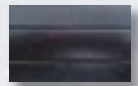
Brown*



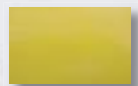
Beige*



Green*



Black



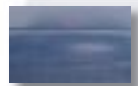
Yellow



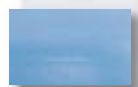
White



Grey



Dark Blue



Light Blue

Simulated Woodgrain allows the garage door to match exactly to the specialist UPVC window manufacturers colour range by using the same manufacture process. The textured finish is very hard wearing and comes with a limited 10 year warranty.



Teak



Light Oak



Manogany

*Indicates Standard Colour Finish

Premier-Roll

Technical Features

State of the art high security rolling code remote control unit featuring a built-in courtesy light and internal push button operator. Every remote unit comes complete with two keyfob transmitter units.

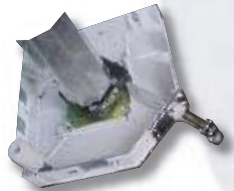
Specially designed guide section, incorporating heavy duty brush seal, eliminating draughts and noise. Every guides section is fully finished in a powder coated paint covering, Standard colours, white and brown

Reinforced bottom edge section incorporating a double insert heavy duty base seal giving the door a tight seal, eliminating draughts and debris from entering the garage when the door is closed.

Premier-roll comes with reinforced aluminium head plates, which are fully finished in white or brown as standard. All head plates feature a nylon roller wheel eliminating noise and wear to the door curtain.

Security locking is achieved using the auto-locking system, locking the door in the closed position,

Safety Photo Cell Unit stops & returns the door to the open position on detecting an obstruction.



Kaiser Doors Ltd. is a progressive company. We reserve the right to update or modify our range of doors without prior consultation.

PO Box 524, Worcester, WR3 8WZ • Tel: 01905 330533 • Fax: 01905 330534
Email: support@rollershutterdoors.com • Web: www.rollershutterdoors.com

Your Local **Premier-Roll** Dealer